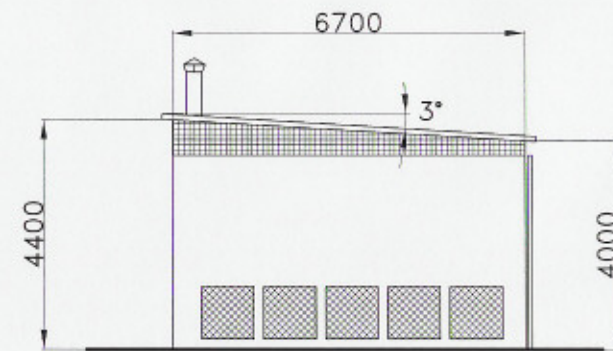
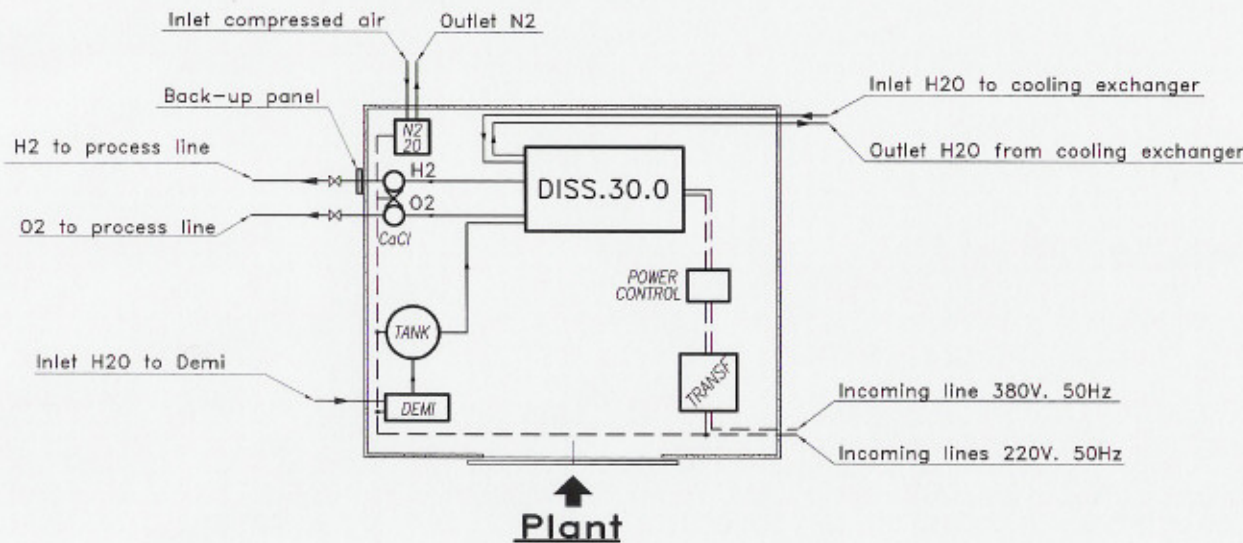


Front view



Side view



Plant

UTILITIES & PIPING

	PIPE (TYPE & SIZE)
Input H2/O2 CaCl	Steel S.S. AISI316 øe12/øi10
Output H2/O2 CaCl	Steel S.S. AISI316 øe12/øi10
Input N2 Diss.30.0	Polyamide (Rilsan) øe10/øi8
Output H2 Diss.30.0	Steel S.S. AISI316 øe12/øi10
Input H2O Diss.30.0	Polyamide (Rilsan) øe10/øi8
In/out cooling water	Rubber 1"
Input/output H2O Demi	Polyamide (Rilsan) øe10/øi8
Input/output N2 20	Rubber 3/4"
ELECTRIC CABLES	
Dissociator 30.0 Power Supply Cable	3x50+1G25
N2 20 Power Supply Cable	3G1.5
Osmodemi Demineralizator Power Supply Cable	3G1.5

DISSOCIATOR 30.0 TECHNICAL DATA

Electrical data	112 kW - 400 V 3 phases - 50/60 Hz
Water consumption	17 l/h max production
H2 production	20000 l/h max production
O2 production	10000 l/h max production
H2/O2 pressure	3+6 bar

N2 20 GENERATOR TECHNICAL DATA

Electrical data	0.5 kW - 230 Vac - 50/60 Hz
Inlet air pressure	7+9.5 bar
Outlet N2 pressure	max 7 bar - 20 Nmc/h max

DEMINERALIZER D30 TECHNICAL DATA

Installed power	0.25 kW - 230 Vac - 50/60 Hz
Delivery	30 lt/h

NOTE

BASECON DI RIFERIMENTO
REFERENCE DRAWINGS

4					
3					
2					
1					
0	EMISSION	16/02/05	Ferraro	Tozzi	
REV.	DESCRIZIONE/DESCRIPTION	DATA/DATE	DVS/DRAW	ENT/CHECK	APPROV.

TITOLO
TITLE
**INSTALLATION LAYOUT
DISSOCIATOR 30.0 +
GEN. N2 20 + CaCl**

MACCHINA
MACHINE
SOSTITUISCE R.
REPLACE THE
NOTE FILE
FILE NAME
OCCL25500.dwg
DATA 16/02/05
SCALE 1:100

Idroenergy s.r.l.

Prodotto dalla Idroenergy S.r.l. - Disegno libero.
a norma di legge - Idroenergy property
Reproduction and alteration forbidden.

FOGLIO SHEET 1 SEQUE - FORM. AJ

DVS n°/DRAWING n°
GC GL 255 REV. 0