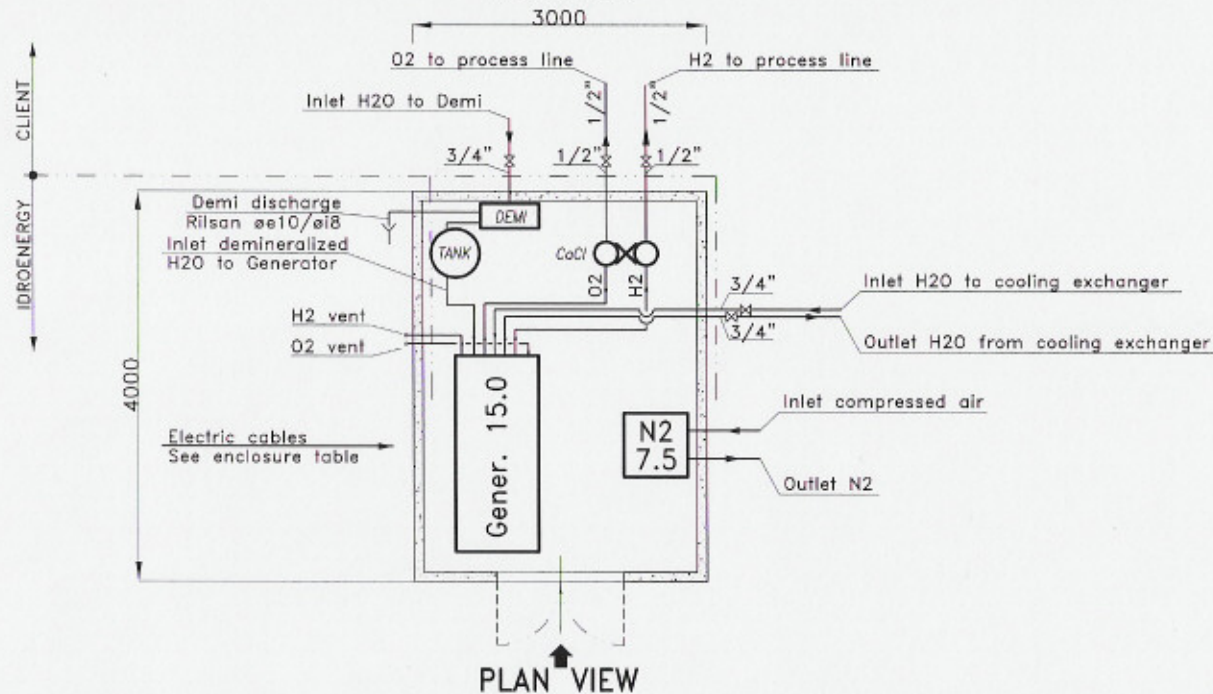


ELEVATION



SIDE VIEW



PLAN VIEW



H2/O2 VENT DETAIL

NOTE: take out vent pipes with 22 mm. external ø

UTILITIES & PIPING

	PIPE (TYPE & SIZE)	FITTINGS (inox)
Input H2/O2 CaCl	Steel S.S. AISI316 ø12/ø10	Fitting 3/8"-12 (ogive coupling)
Output H2/O2 CaCl	Steel S.S. AISI316 ø12/ø10	Fitting 3/8"-12 (ogive coupling)
Input N2 Gen.15.0	Polyamide (Rilsan) ø10/ø8	Fitting for RILSAN
Output H2 Gen.15.0	Steel S.S. AISI316 ø12/ø10	Fitting 3/8"-12 (ogive coupling)
Input H2O Gen.15.0	Polyamide (Rilsan) ø10/ø8	Fitting for RILSAN
In/out cooling water	Rubber 3/4"	Fitting 1/2" gas F
Input/ouput H2O Demi	Polyamide (Rilsan) ø10/ø8	Fitting for RILSAN
Input/ouput N2 7.5	Rubber 3/4"	Fitting 1/2" gas F
H2 vent	Steel S.S. AISI316 ø22	Fitting 1/2" gas F (ogive coupling)
O2 vent	Steel S.S. AISI316 ø22	Fitting 1/2" gas F (ogive coupling)

ELECTRIC CABLES

Generator 15.0 Power Supply Cable	3x50+1G25
N2 7.5 Power Supply Cable	3G1.5
Camademi Demineralizator Power Supply Cable	3G1.5

GENERATOR 15.0 TECHNICAL DATA

Electrical data	54 kW - 400 V 3 phases - 50/60 Hz
Water consumption	8.4 l/h max production
H2 production	10000 l/h max production
O2 production	5000 l/h max production
H2/O2 pressure	4 bar

N2 7.5 GENERATOR TECHNICAL DATA

Electrical data	0.2 kW - 230 Vac - 50/60 Hz
Inlet air pressure	7±9.5 bar
Outlet N2 pressure	max 7 bar - 7.5 Nmc/h max

DEMINERALIZER D20 TECHNICAL DATA

Installed power	0.25 kW - 230 Vac - 50/60 Hz
Delivery	15 lt/h

NOTE

NOTE

DISEGNI DI RIFERIMENTO
REFERENCE DRAWINGS

REV.	DESCRIZIONE/DESCRIPTION	DATA/DATE	DESIGNER	CHECKER	APPROV.
0	EMMISSION	18/02/05	Fantozzi	Tozzi	

TITOLO
TITLE

INSTALLATION LAYOUT
GENERATOR 15.0
+ CaCl + N2 7.5

Idroenergy s.r.l.
Proprietà della Idroenergy S.r.l. - Disegno riservato a norma di legge - Idroenergy property
Reproduction and adaptation forbidden

FOGLIO SHEET 1
SEGUE - NEXT

FORM. AJ

GC GL 256 0